



NORTHWEST ARKANSAS --- LAND TRUST

2018 ANNUAL REPORT





1,000
ACRES COMMITTED
TO CONSERVATION



3,212
PEOPLE ENGAGED IN
THE MISSION OF THE
LAND TRUST



\$958,105
DOLLARS RAISED



1500+
STUDENTS ENGAGED
IN ENVIRONMENTAL
EDUCATION



913
VOLUNTEER HOURS



350+
LANDOWNERS
REACHED

From the Director



2018 marked the 15th anniversary of the Northwest Arkansas Land Trust (NWALT) and was another year of growth for the organization, each in terms of programming, operations and support.

As we share the enclosed highlights of the previous year, we want to express our immense gratitude for the increasing number of individual donors, landowners, corporate sponsors and community partners who help us SAVE LAND every day in our growing region! We know that many of you, like us, are passionate about preserving quality of life in Northwest Arkansas.

Saving our natural landscapes in the face of rampant urban growth, however, requires bold action and dedication. In 2018, we launched an ambitious campaign to protect an additional 5,000 acres of land and raise \$2.8 million over three years. We are happy to report that we are well on our way, and we hope that you will join in supporting this important campaign!

Yours in Conservation,

Terri Lane
Executive Director, Northwest Arkansas Land Trust



**NORTHWEST ARKANSAS
LAND TRUST**

15 Years of Conservation

Celebrating Milestones as Your Local Land Trust

For the last 15 years, the Northwest Arkansas Land Trust has been working to #SaveLand in our growing region!

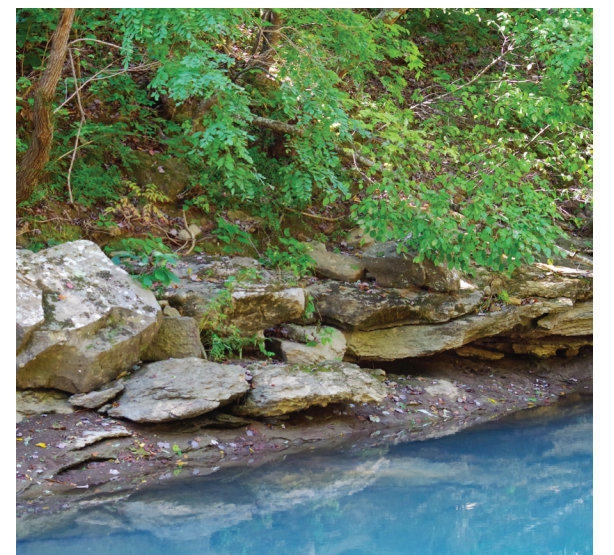
The Land Trust has spent the last 15 years dedicated to protecting quality of life in Northwest Arkansas including clean air, clean water, wildlife habitat, abundant scenic beauty, local food supplies, recreational opportunities, and our natural heritage for the benefit of the community and the many generations to come.

Northwest Arkansas has always captured the hearts of residents and visitors alike. Well known for our captivating natural landscapes and resources, thousands of people each year are choosing to make this region their home. More than 600,000 residents savor the breathtaking beauty of the rivers, lakes, forests, and mountains that surround us.

At a time of rapid growth in our region, we launched an exciting new campaign to increase the pace of land conservation in Northwest Arkansas. Through the Land for Life Campaign, we have committed over the next three years to:

- Protecting 5,000 acres of important natural areas
- Raise \$2.8 million in community support
- Facilitate 1,600 volunteer hours to care for lands through 24 volunteer work days
- Open 6 properties to the public
- Establish a land stewardship intern program

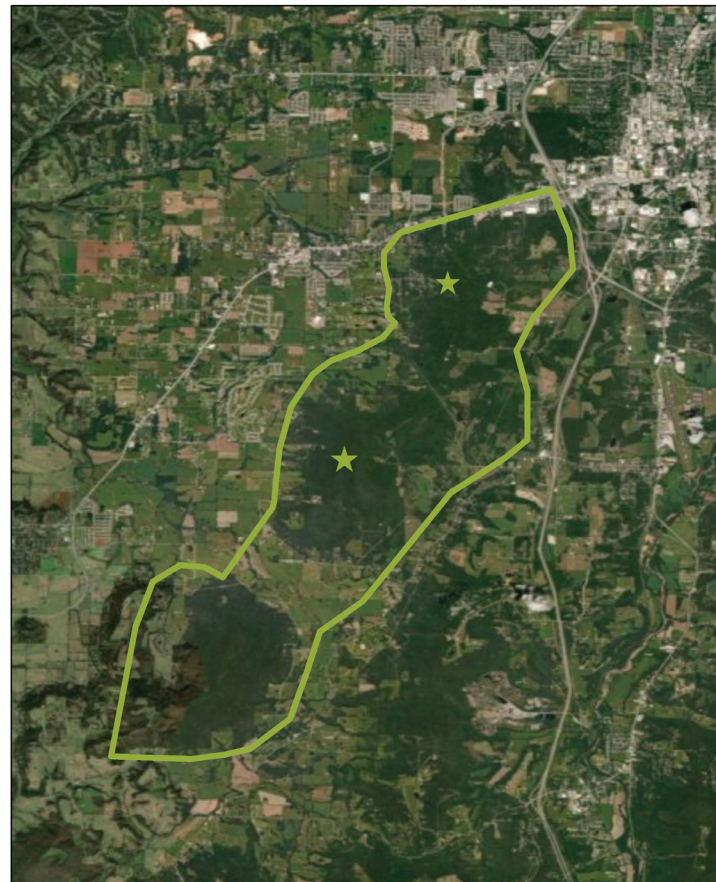
The success of the campaign requires the participation and support of our community!



Saving our Land, Water and Wildlife

THANK YOU LANDOWNERS!

GREATER KESSLER MOUNTAIN WILDLIFE REGION



698 Acres & Counting!

An additional 90 acres of forested habitat in the Greater Kessler Mountain Wildlife Region were permanently conserved in 2018, bringing the total acreage of protected land to nearly 700. This priority landscape was identified by the land trust for its importance in protecting plant and animal species, water quality, climate resiliency, recreation and scenic values. Connected natural landscapes are critical for wildlife movement and survival.



10 acre forested parcel on the west side of Kessler Mountain



Land Stewardship Specialist Alan Edmondson and landowner Nancy Harris on Miller Mountain.

THUNDER RIDGE RANCH



900 Acres on Bull Shoals Lake

Landowners Gerald and Dwan Garrison (pictured left) forever protected their majestic 900-acre "Thunder Ridge Ranch" on the shores of Bull Shoals Lake in Marion county through a conservation easement. It's the largest tract of land placed into protection by the Land Trust to date.

"Anytime we can preserve such a large tract of pristine Ozark habitat, it is a true gift to the people and wildlife of Arkansas for many generations to come," says Terri Lane, Executive Director.

Gerald's family has homesteaded the property since 1958. With rugged bluffs, oak-hickory forests, streams, and shoreline, the property is home to an abundance of wildlife including black bear, deer and wild turkey. Other conservation benefits include protecting water quality and scenic views.



Above: Dwan's favorite spot
Below: Wild turkeys on the property

Growing Our Team, Growing Our Impact

How can we best serve our dynamic region? We asked ourselves that question in a strategic planning meeting two years ago and one thing was very clear – to keep pace with the need for local land conservation in Northwest Arkansas, we must grow our team. In 2018 we did just that, welcoming new members to our dedicated staff for greater impact. We thank YOU - our community partners and donors – for helping us keep pace with the need for local land protection in our growing region!



MARSON NANCE
Director of Land Protection and Stewardship



LAUREN EMBREE
Director of Communications and Development



SUSAN KOEHLER
Farmland Preservation Coordinator



LEAH SAFFIAN
Office Administrator

Our Board of Directors Welcomed New Members in 2018!



JASON EVINS
C.R. Crawford Construction

Jason has a diverse background in Real Estate, Finance and Human Resources and currently serves as Chief Operating Officer for CR Crawford Construction in Fayetteville. Jason worked for Cooper Communities and Walmart before joining CR Crawford and he is a member of the MBA Alumni Advisory Board at the Sam M. Walton College of Business.



JEFF RICE
Walmart

Jeff Rice is Vice President, Responsible Sourcing Merchant and Supplier Solutions at Walmart. His team is responsible for integrating responsible sourcing into the processes, systems and strategies of Walmart’s buyers and sourcing teams globally. He also leads teams that deliver training solutions for merchants and suppliers and develops strategies for engaging external stakeholders that can amplify Walmart’s impact in global supply chains.

Educating the Next Generation of Conservationists

Over 1,500 students from across Northwest Arkansas participated in Land Trust programs in 2018. In addition to hosting area schools through the Kessler Mountain Outdoor Classroom & Nature Center, the Land Trust provided more than 30 free community programs and on-the-land events. These unique experiences included a BioBlitz of Wilson Springs Preserve, Kessler Mountain Geology Hikes, Botany Walks, and Bird Counts.



Providing opportunities for people of all ages, abilities and backgrounds to connect with nature is a guiding principle of our work. Students learn about the plants and animals that make our Ozarks so unique. Friends and families learn about our natural heritage from area experts through our speaker series, guided hikes and programs.

Protected landscapes serve as a learning laboratory. College interns, volunteers and community partners help make this important aspect of our work possible. To learn more, visit our website and follow us on social media.



Happy Trails: Nature for All!

With our headquarters uniquely located at the base of Kessler Mountain in Fayetteville, AR - and connected to a .6-mile educational trail loop maintained by the Land Trust - we have a front row seat to the many hikers, wildlife watchers, dog-walkers, and solitude-seekers who enjoy the forest loop trail each and every day. Open to the public from dawn until dusk, you can access this trail from the lower parking lot of the Ozark Mountain Smokehouse building located at 1725 S Smokehouse Trail in Fayetteville.





NORTHWEST ARKANSAS
LAND TRUST

1725 S Smokehouse Trail
Fayetteville, AR 72701
479-966-4666 | info@nwalandtrust.org
www.nwalandtrust.org

BOARD OF DIRECTORS

EILEEN JENNINGS

President

KEVIN THORNTON

Vice-President

JASON EVINS

Secretary/Treasurer

JENNY BURBIDGE

ED CLIFFORD

JIM GALLAGHER

MICHELLE HARRINGTON

LORRAINE HEARTFIELD

THOMAS OPPENHEIM

JEFF RICE

TIM SNELL

STAFF

TERRI LANE

Executive Director

tlane@nwalandtrust.org

MARSON NANCE

Director of Land Protection

mnance@nwalandtrust.org

LAUREN EMBREE

Director of Communications
and Development

lembree@nwalandtrust.org

ALAN EDMONDSON

Land Stewardship Specialist

aedmondson@nwalandtrust.org

PAM NELSON

Program Coordinator

pnelson@nwalandtrust.org

SUSAN KOEHLER

Farmland Preservation Coordinator

skoehler@nwalandtrust.org

LEAH SAFFIAN

Office Administrator

lsaffian@nwalandtrust.org